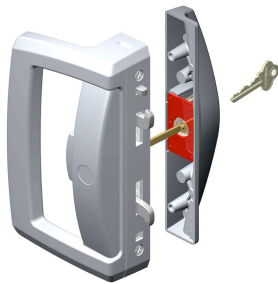


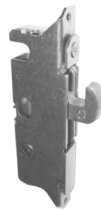
slim backset mortise lock (SBML) solutions

// product features // locking system

- One, two, four and six-point mortise locks
- For higher structural performance: two-point mortise lock with stainless steel hooks available
- Mishandling device (anti-slam button) as standard (except for single point)
- Available for aluminum, wood or vinyl sliding doors
- High corrosion and forced entry resistance



Surface Mount Option



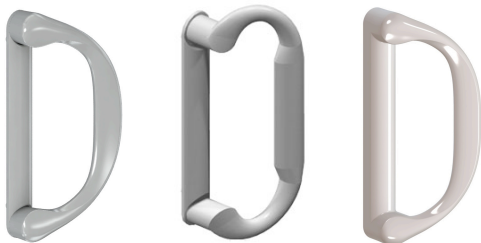
All Stainless Steel
Single-Point Option



Multi-Point Mortise
Locks with Zinc Die Cast
or Stainless Steel Hooks



// product features // handles



Involute

R1

One-Piece

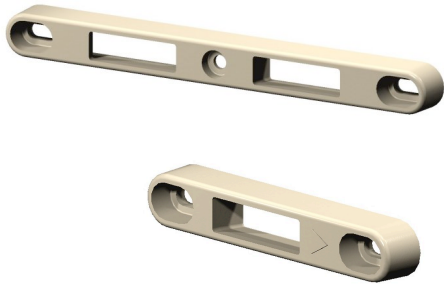
- Contemporary and traditional designs
- Low-cost one-piece option

INTERLOCK

ASSA ABLOY

// product features // strikers

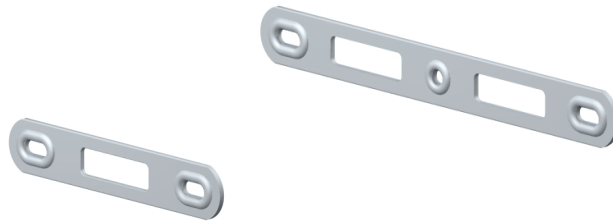
- Fixed and adjustable keepers
- Self-locating and snap-in options
- Snap-on end cap available for extruded striker for easy and efficient installation



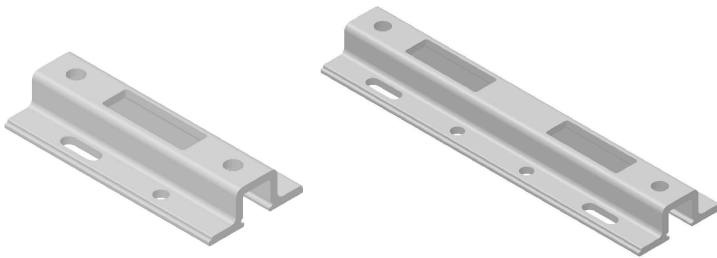
Die-Cast Strikers



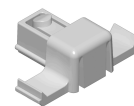
Adjustable Strikers



Stainless Steel Strikers



Extruded Strikers



Patented Snap-on End Cap

INTERLOCK

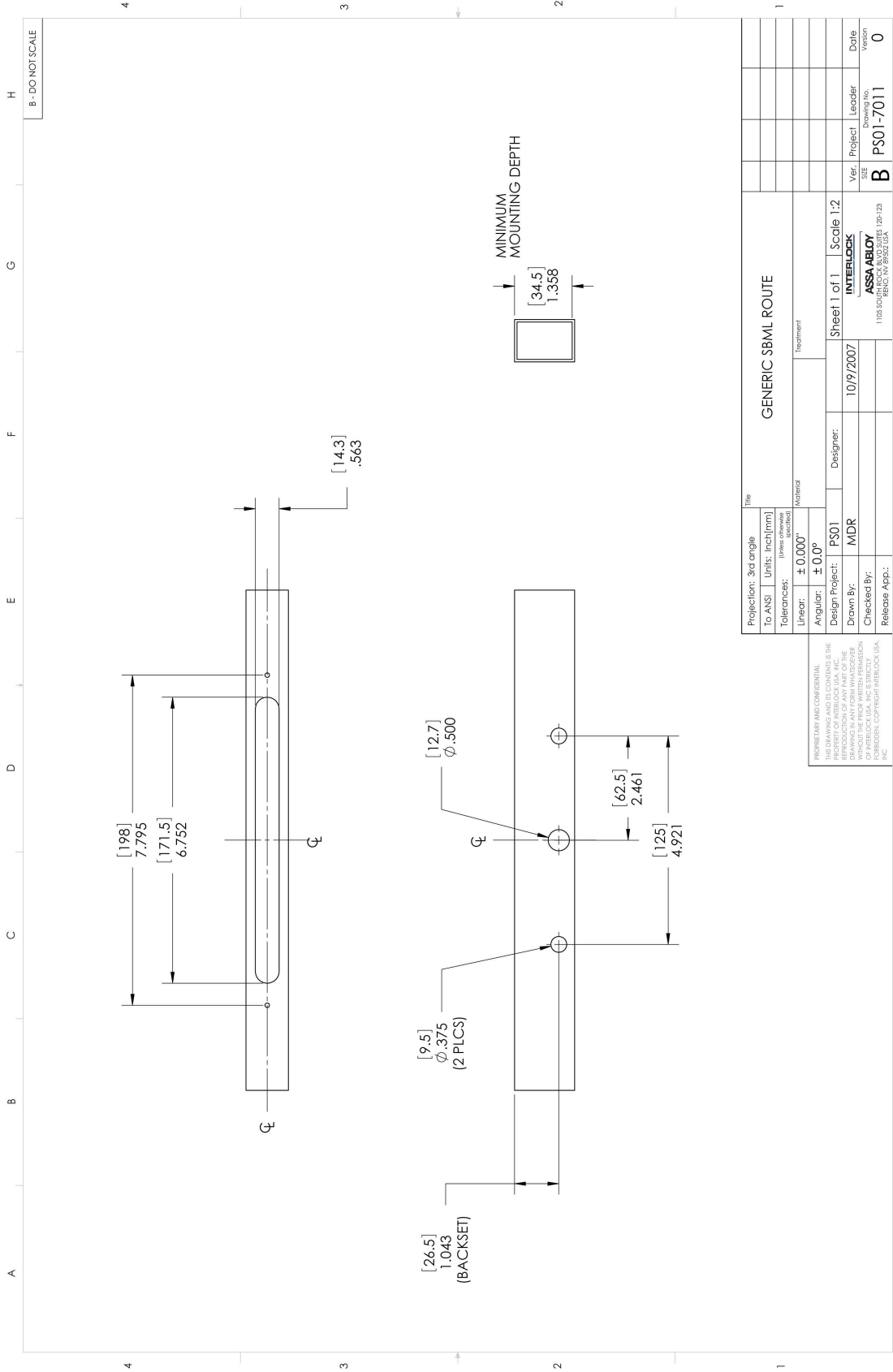
ASSA ABLOY

// product specifications

- Exceeds all required FER testing requirements
- Endurance tested to 20,000 operating cycles
- Neutral Salt Spray tested 1,000 hours minimum

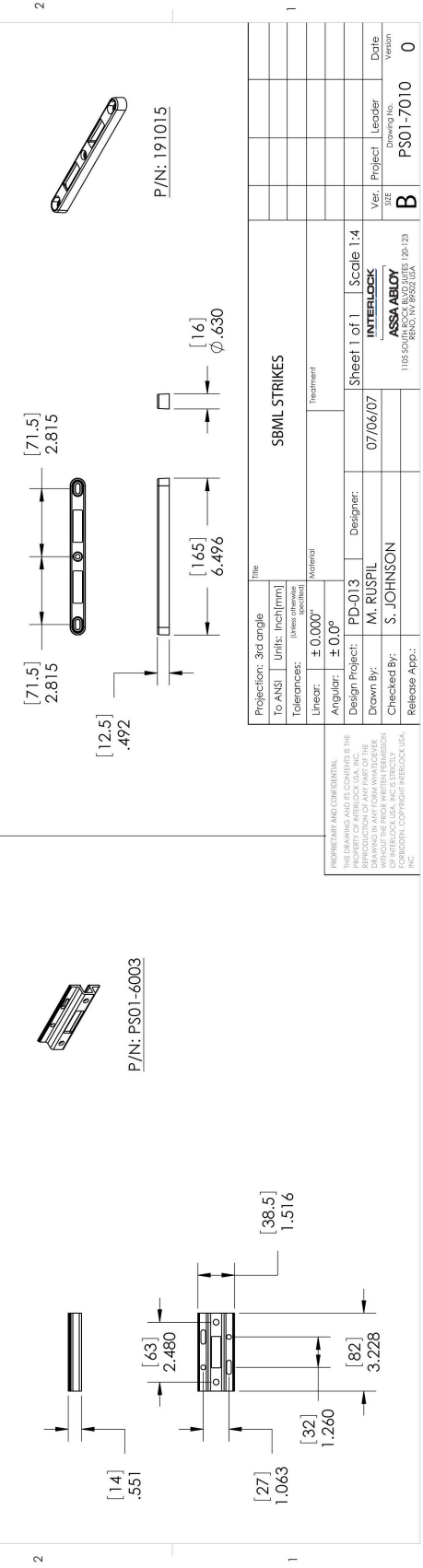
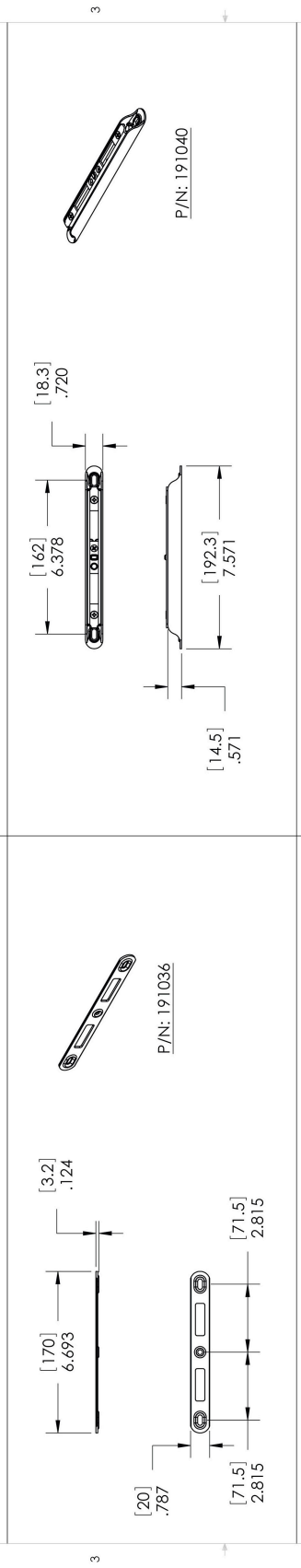
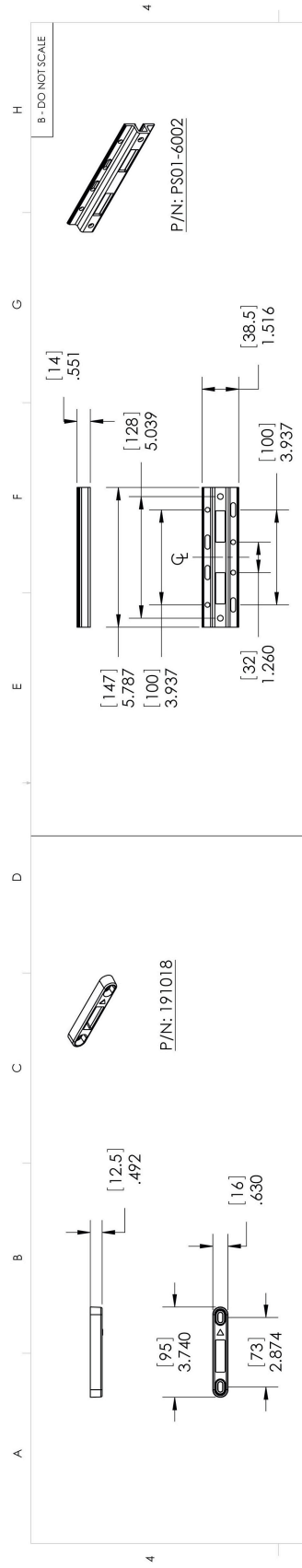
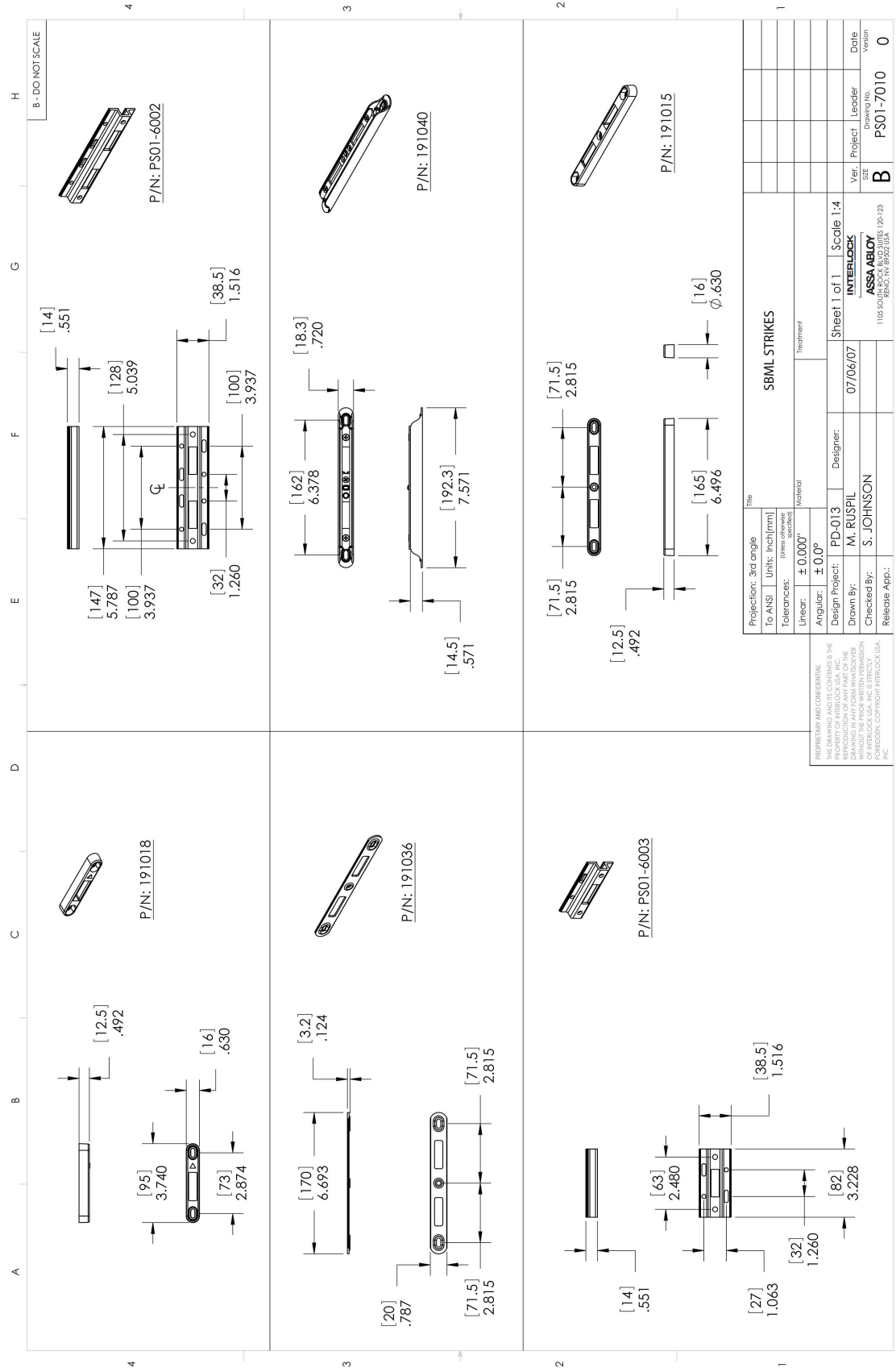
// materials & finishes

- Zinc Alloy housings and anodized aluminum faceplates
- Zinc Alloy handles in all powdercoat and architectural finishes
- Nickel plated hooks; stainless steel hooks available on two-point mortise lock for higher structural performance
- Stainless springs



Projection: 3rd angle		Title	
To ANSI:	Units: inch/mm	GENERIC SBML ROUTE	
Tolerances:	(Unless otherwise specified)	Treatment	
Linear:	± 0.000	Sheet 1 of 1	
Angular:	$\pm 0.0^\circ$	Scale:	Scale 1:2
Design Project:	PS01	Designer:	MDR
Drawn By:	MDR	Checked By:	INTERLOCK
Release App.:		Release Date:	ASSA ABLOY
		Release No.:	1103.001001.100.123
		Ver.:	B
		Project:	PS01-7011
		Leader:	
		Date:	
		Version:	0

PROPRIETARY AND CONFIDENTIAL
 THIS DRAWING AND ITS CONTENTS IS THE
 PROPERTY OF ASSA ABLOY. THE
 REPRODUCTION OF ANY PART OF THE
 DRAWING OR THE INFORMATION CONTAINED
 HEREIN WITHOUT THE WRITTEN PERMISSION
 OF INTERLOCK USA, INC. IS STRICTLY
 PROHIBITED. COPYRIGHT INTERLOCK USA,
 INC.



A B C D E F G H

8 - DO NOT SCALE