

# RENNA 225 Side Adjust Series Roller

ASSA ABLOY

The global leader in  
door opening solutions

**ASSA ABLOY's RENNA series offers the latest innovation in high quality sliding door rollers. Featuring Interlock USA's patented interlocking technology, RENNA rollers are AAMA certified to effortlessly operate the industries heaviest loads without collapse or separation.**

The RENNA 225 Side Adjust series rollers, adjustable at full load, are offered in various configurations to suit your sliding door requirements. Extruded, turned composite wheels, provide quiet operation, reduced track wear and resistance.

## Features

- Patented interlocking technology prevents collapse and separation at maximum load
- Precision wheel bearings with rubber end seals
- Industry leading carriage wall thickness
- Offered with extruded, turned composite wheels for smoother operation
- Adjustment screw accessible at both sides
- Certified to the requirements of AAMA 906-15
- Weight capacity 225 lbs per roller
- Available for use on vinyl, wood and aluminum



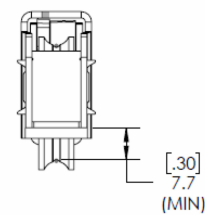
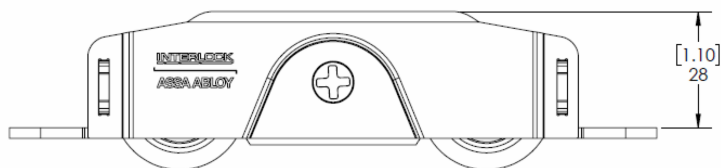
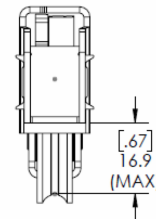
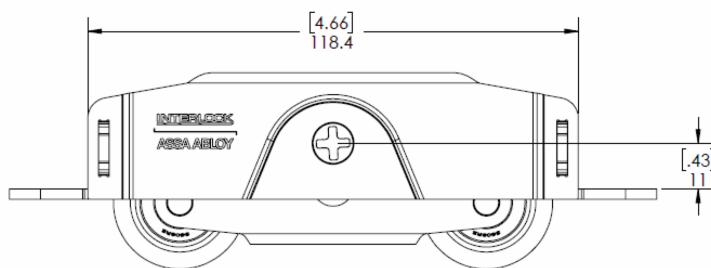
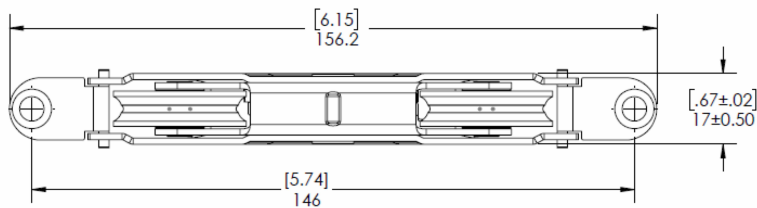
## Specifications

RENNA 225 Side Adjust Series Roller Matrix

Part Code	Mounting Tab	Roller Diameter	Maximum Door Weight*	Adjustment Range
PR05-6000	STANDARD	1.25" (31.8mm)	450 lbs.	0.370"
PR05-6005	STANDARD	1.25" (31.8mm)	450 lbs.	0.370"
PR05-6100	STANDARD	1.25" (31.8mm)	450 lbs.	0.370"
PR05-6105	STANDARD	1.25" (31.8mm)	450 lbs.	0.370"
PR05-6007	INVERTED	1.25" (31.8mm)	450 lbs.	0.370"
PR05-6008	INVERTED	1.25" (31.8mm)	450 lbs.	0.370"
PR05-6108	INVERTED	1.25" (31.8mm)	450 lbs.	0.370"
PR05-6120	EXTENDED	1.25" (31.8mm)	450 lbs.	0.270"
PR05-6125	EXTENDED	1.25" (31.8mm)	450 lbs.	0.270"

\*Internally tested at 625 lbs. at 6,600 operating cycles

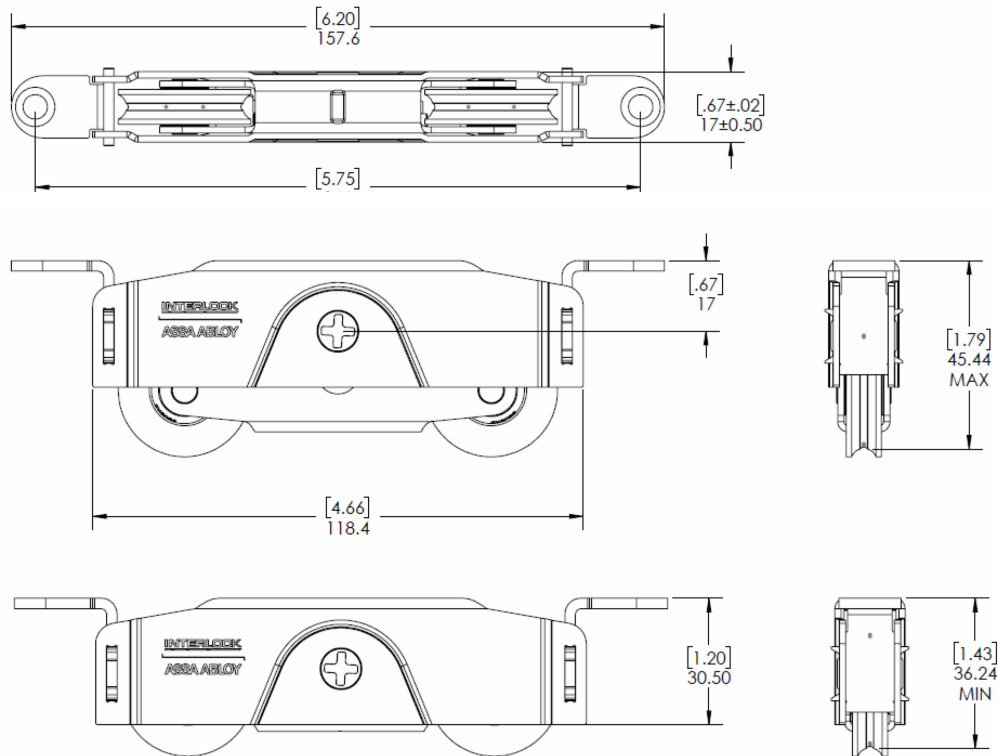
## Standard Mounting Tabs



### Specifications

Part Code	Mounting Tab	AAMA Certified	Case & Carrier Material		Wheel Material			Adjustment Range
			stainless	steel	composite	stainless	steel	
PR05-6000	STANDARD	X	X			X	0.370"	
PR05-6005		X	X		X			
PR05-6100				X				X
PR05-6105		X		X	X			

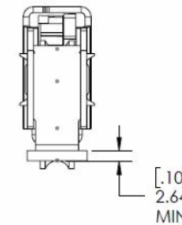
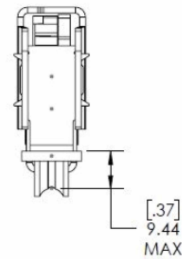
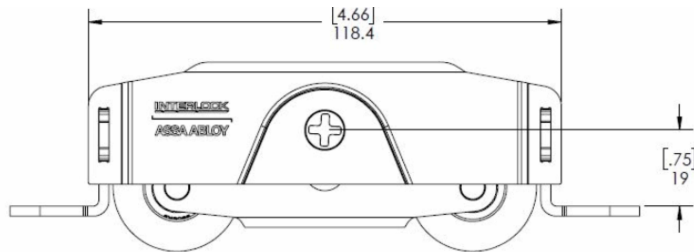
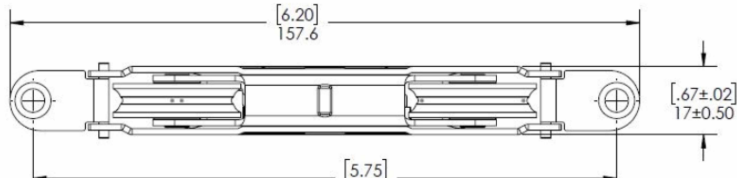
## Inverted Mounting Tabs



### Specifications

Part Code	Mounting Tab	AAMA Certified	Case & Carrier Material		Wheel Material			Adjustment Range
			stainless	steel	composite	stainless	steel	
PR05-6007	INVERTED	X	X		X			0.370"
PR05-6008		X	X		X			
PR05-6108				X			X	

## Extended Mounting Tabs



### Specifications

Part Code	Mounting Tab	AAMA Certified	Case & Carrier Material		Wheel Material			Adjustment Range
			stainless	steel	composite	stainless	steel	
PR05-6120	EXTENDED			X			X	0.270"
PR05-6125		X	X		X			