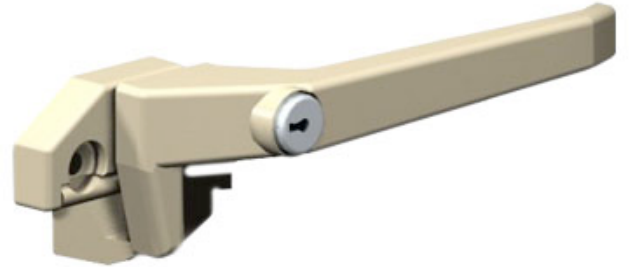


||||| wedgeless deluxe handle

// product features

- Provides excellent seal compression and security
- Unique “Wedgeless” design does not require a strike
- RH and LH models available
- Patented Interlock friction joint provides a smooth and quality feel
- Available in a low profile handle option for extra blind clearance
- Optional locking cylinder available for additional security and child safety



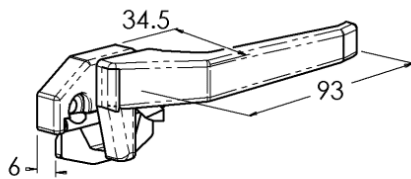
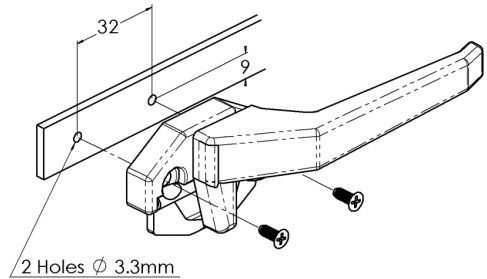
// product specifications

- 6 mm (1/4”) offset as standard
- Leverlock available in 1.6 mm (1/16”) and 3.2 mm (1/8”)

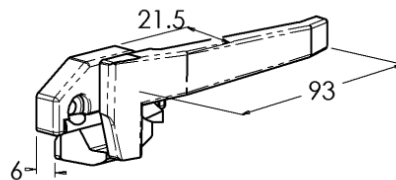
// materials & finishes

- Handle and base are zinc alloy
- Strike flap is high strength polymer
- Available in powdercoated and plated finishes

RECOMMENDED FIXING
2 x 8G x 3/8" RAISED CSK POSI
TYPE B STAINLESS SCREWS
PART No 8017



High Profile Wedgeless

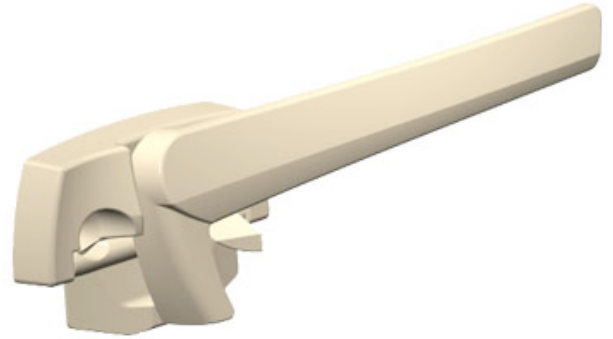


Low Profile Wedgeless

aria wedgeless handle

// product features

- Sleek modern styling
- Unique “Wedgeless” design does not require separate strike
- Provides excellent seal compression and security
- Available in a low profile handle option for extra blind clearance
- RH and LH models available
- Patented Interlock friction joint provides a smooth and quality feel



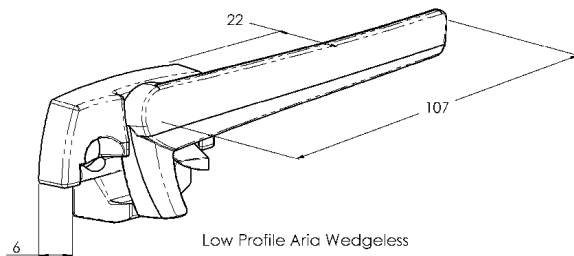
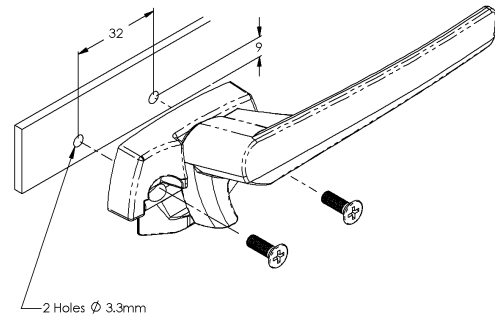
// product specifications

- 6 mm (1/4”) offset as standard

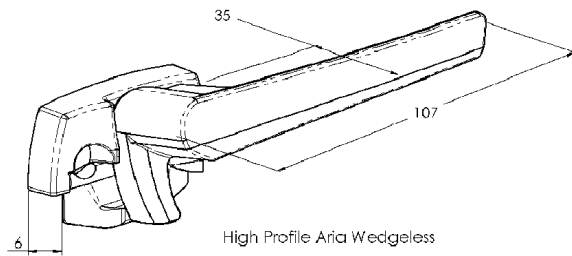
// materials & finishes

- Handle and base are zinc alloy
- Flap is high strength polymer
- Available in powdercoated and plated finishes

RECOMMENDED FIXING
2 x 8G x 3/8" RAISED CSK POSI
TYPE B STAINLESS SCREWS
PART No 8017



Low Profile Aria Wedgeless



High Profile Aria Wedgeless

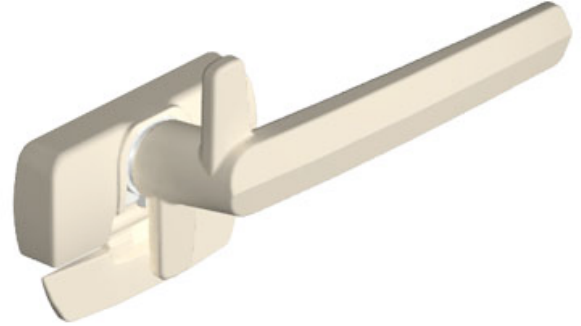
INTERLOCK

ASSA ABLOY

aria venting wedgeless handle

// product features

- Venting position allows for air flow and security simultaneously
- Sleek modern styling
- Unique “Wedgeless” design does not require separate strike
- Provides excellent seal compression and security
- RH and LH models available
- Patented Interlock friction joint provides a smooth and quality feel



// product specifications

- 6 mm (1/4") offset as standard
- 16 mm open venting position

// materials & finishes

- Handle and base are zinc alloy
- Flap is high strength polymer
- Available in powdercoated and plated finishes