



# ROLLER TILT® ELITE™ 562 & 625

Sash Removal & Installation Instructions with 24A0031 Tamperlock

## Removal Instructions



**Step 1:** Begin with window sashes closed.



**Step 2:** Fully raise lower sash.



**Step 3:** Disengage tilt latches to tilt lower sash.

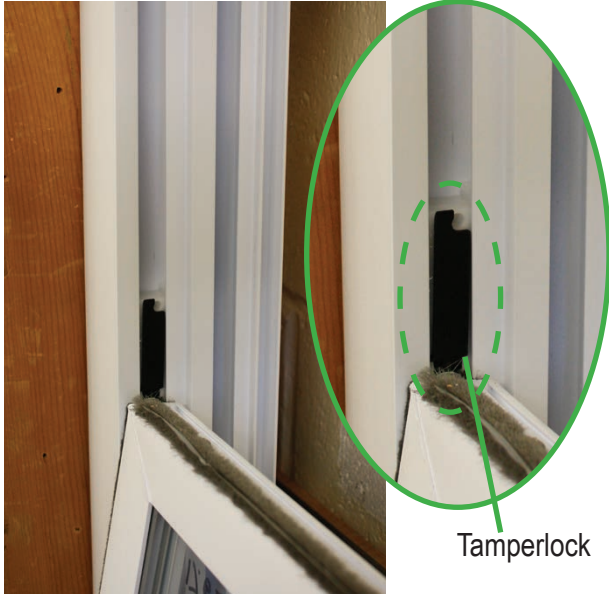


**Step 4:** Tilt lower sash down.



# ROLLER TILT® ELITE™ 562 & 625

Sash Removal & Installation Instructions with 24A0031 Tamperlock



**Step 5:** Fully tilt lower sash until tamperlock is completely visible

*If tamperlock is not fully exposed, refer to limited tilt procedure (page 10).*



**Step 6:** Insert screw driver behind the top of the tamperlock



**Step 7:** Pry top of tamperlock to disengage from opening.



**Step 8:** Remove tamperlock from balance by tilting towards the center of the window.

**Step 9:** Repeat Steps 6-8 on opposite side of sash.



# ROLLER TILT® ELITE™ 562 & 625

Sash Removal & Installation Instructions with 24A0031 Tamperlock



**Step 10:** Push down on the right or left side of the sash near the window frame until sash pivot pin on opposite side may be removed from balance shoe.



**Step 11:** Remove lower sash.



**Step 12:** Open the upper sash approx 1 inch.



**Step 13:** Disengage tilt latches to tilt upper sash.



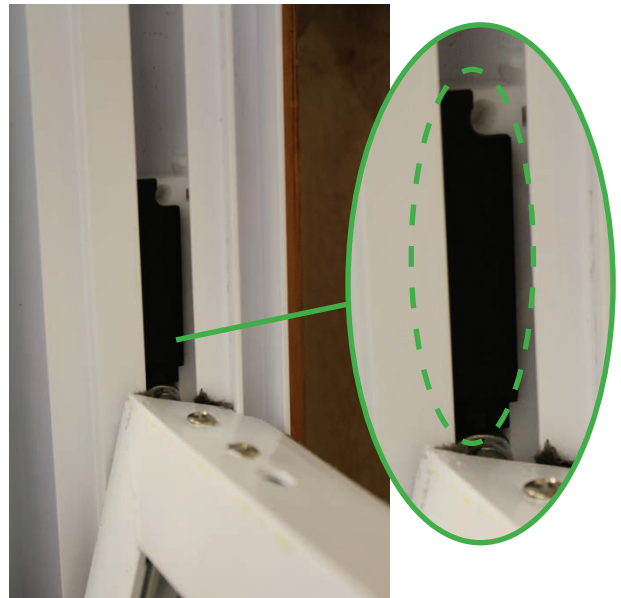


# ROLLER TILT® ELITE™ 562 & 625

Sash Removal & Installation Instructions with 24A0031 Tamperlock



**Step 14:** Tilt upper sash down.



**Step 15:** Fully tilt upper sash until tamperlock is completely visible



**Step 16:** Insert screw driver behind the top of the tamperlock. Pry top of tamperlock to disengage from opening.



**Step 17:** Remove tamperlock from balance by tilting towards the center of the window opening.



**Step 18:** Repeat Steps 15-17 on opposite side of sash.



Tamperlock is removed.



# ROLLER TILT® ELITE™ 562 & 625

Sash Removal & Installation Instructions with 24A0031 Tamperlock



**Step 19:** Push down on the right or left side of the sash near the window frame until sash pivot pin on opposite side may be removed from balance shoe.



**Step 20:** Remove upper sash.

## Removal Complete

---

## Installation Instructions



**Step 21:** Insert the upper sash. Engage first pivot pin into balance shoe.



**Step 22:** Engage second sash pivot pin on opposite side into balance shoe.



# ROLLER TILT® ELITE™ 562 & 625

Sash Removal & Installation Instructions with 24A0031 Tamperlock



**Step 23:** Level sash by pushing down on highest sash corner near frame.



T-shaped opening in balance shoe

**Step 24:** Fully tilt sash down until T-shaped opening in balance shoe is completely visible.



**Step 25:** Hold the tamperlock.



**Step 26:** Insert the tamperlock at an angle into the T-shaped opening indicated in Step 24.





# ROLLER TILT® ELITE™ 562 & 625

Sash Removal & Installation Instructions with 24A0031 Tamperlock

Square hole in balance shoe



**Step 27:** Push the tamperlock towards the balance until top of tamperlock clicks into the square hole in balance shoe.

**Step 28:** Repeat Steps 25-27 on opposite side of sash.



**Step 29:** Tilt the upper sash up to engage sash tilt latches into frame.



**Step 30:** Raise to close the upper sash



**Step 31:** Insert the lower sash



# ROLLER TILT® ELITE™ 562 & 625

Sash Removal & Installation Instructions with 24A0031 Tamperlock



**Step 32:** Engage the sash pivot pin into balance shoes (See Steps 21 & 22)

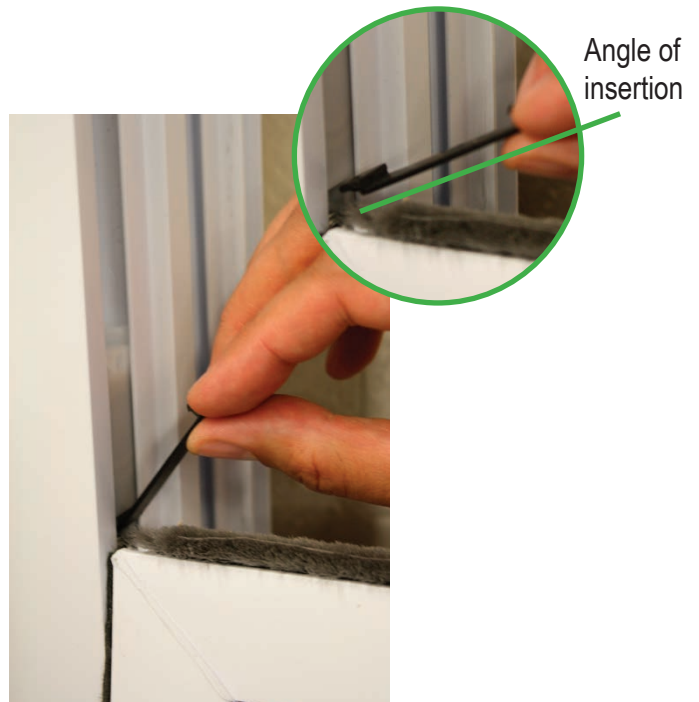


**Step 33:** Level sash by pushing down on highest sash corner near frame.



T-shaped opening in balance shoe

**Step 34:** Fully tilt sash down until T-shaped opening in balance shoe is completely visible.



Angle of insertion

**Step 35:** Insert the tamperlock into T-shaped opening (shown in Step 34) at angle then rotate the tamperlock toward the balance.

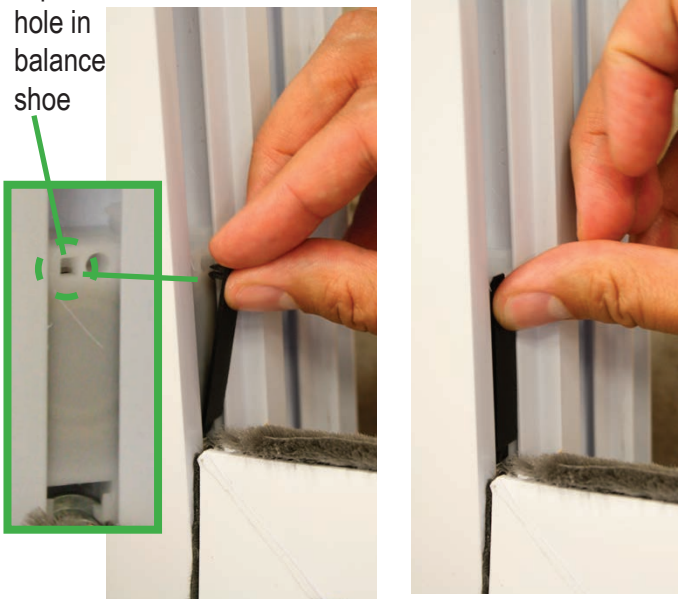




# ROLLER TILT® ELITE™ 562 & 625

Sash Removal & Installation Instructions with 24A0031 Tamperlock

Square hole in balance shoe



**Step 36:** Continue pushing the tamperlock towards the balance until the top of tamperlock clicks into square hole in balance shoe.

**Step 37:** Repeat Steps 35-36 on opposite side of sash.



**Step 38:** Tilt the lower sash up to engage sash tilt latches into frame.



**Step 39:** Ensure proper operation



**Step 40:** Close lower sash.

**Installation Complete**



# ROLLER TILT® ELITE™ 562 & 625

Sash Removal & Installation Instructions with 24A0031 Tamperlock

## Limited Tilt Removal Instructions



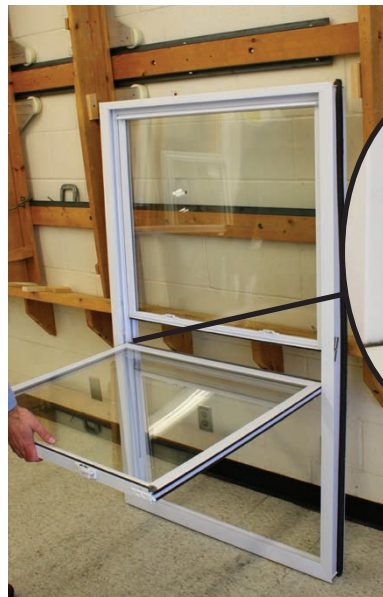
**Step 1:** Begin with window sashes closed.



**Step 2:** Fully raise lower sash.



**Step 3:** Disengage tilt latches to tilt lower sash.



**Step 4:** Tilt lower sash down as shown.



Note:  
Tamperlock  
is not fully  
exposed.



# ROLLER TILT® ELITE™ 562 & 625

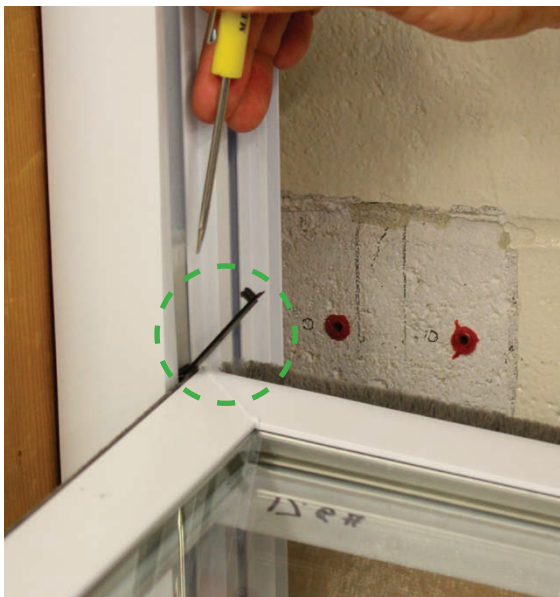
Sash Removal & Installation Instructions with 24A0031 Tamperlock



**Step 5:** Push down on the right or left side of lower sash near the window frame until tamperlock is completely visible on the opposite side.



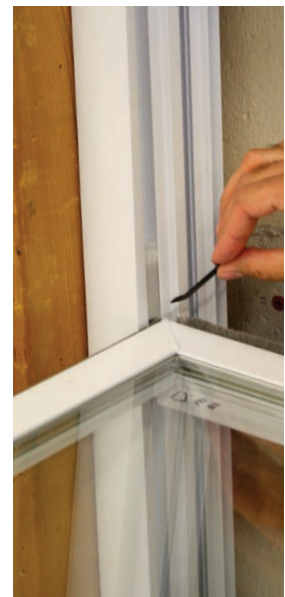
**Step 6:** Insert screw driver behind the top of the tamperlock



**Step 7:** Pry top of tamperlock to disengage from opening.



**Step 8:** Remove tamperlock from balance shoe by tilting towards the center of the window opening.







# ROLLER TILT® ELITE™ 562 & 625

Sash Removal & Installation Instructions with 24A0031 Tamperlock



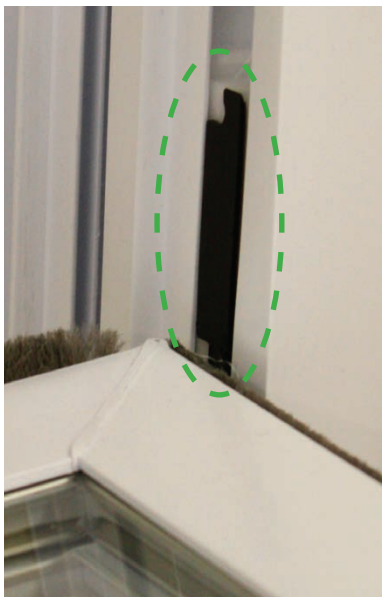
**Step 9:** Push down on lower sash near the window frame on the side that the tamperlock was removed.



**Step 10:** Continue to push lower sash down until tamperlock is completely visible on the opposite side.



(Front view)



**Step 11:** Tamperlock is now fully visible. Repeat Steps 6-8 to remove.



**Step 12:** Remove lower sash.

Refer to Page 3, Step 12 for upper sash removal.

**Limited Tilt Removal Complete**  
*For Installation: follow steps in reverse order.*