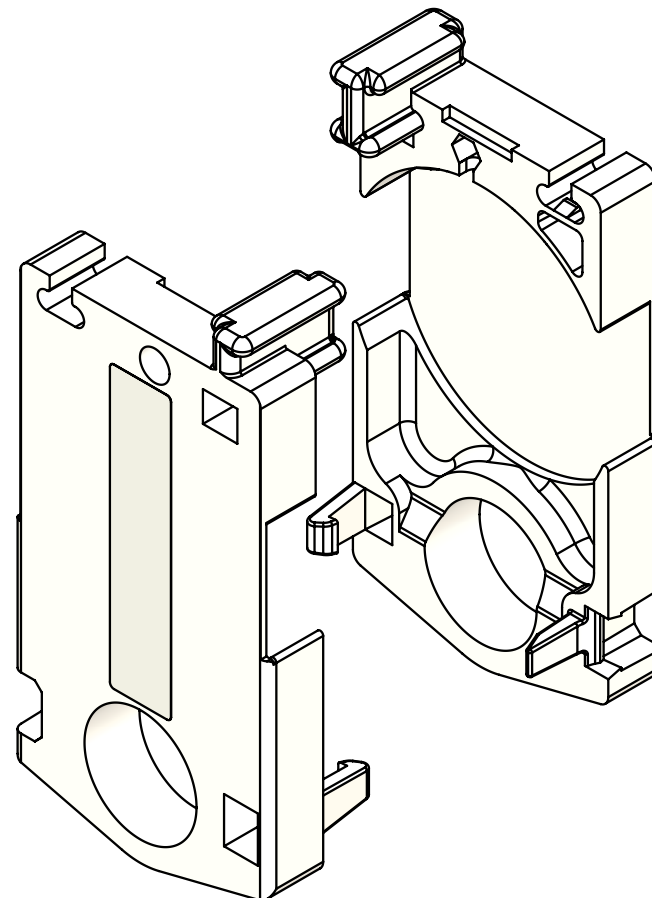
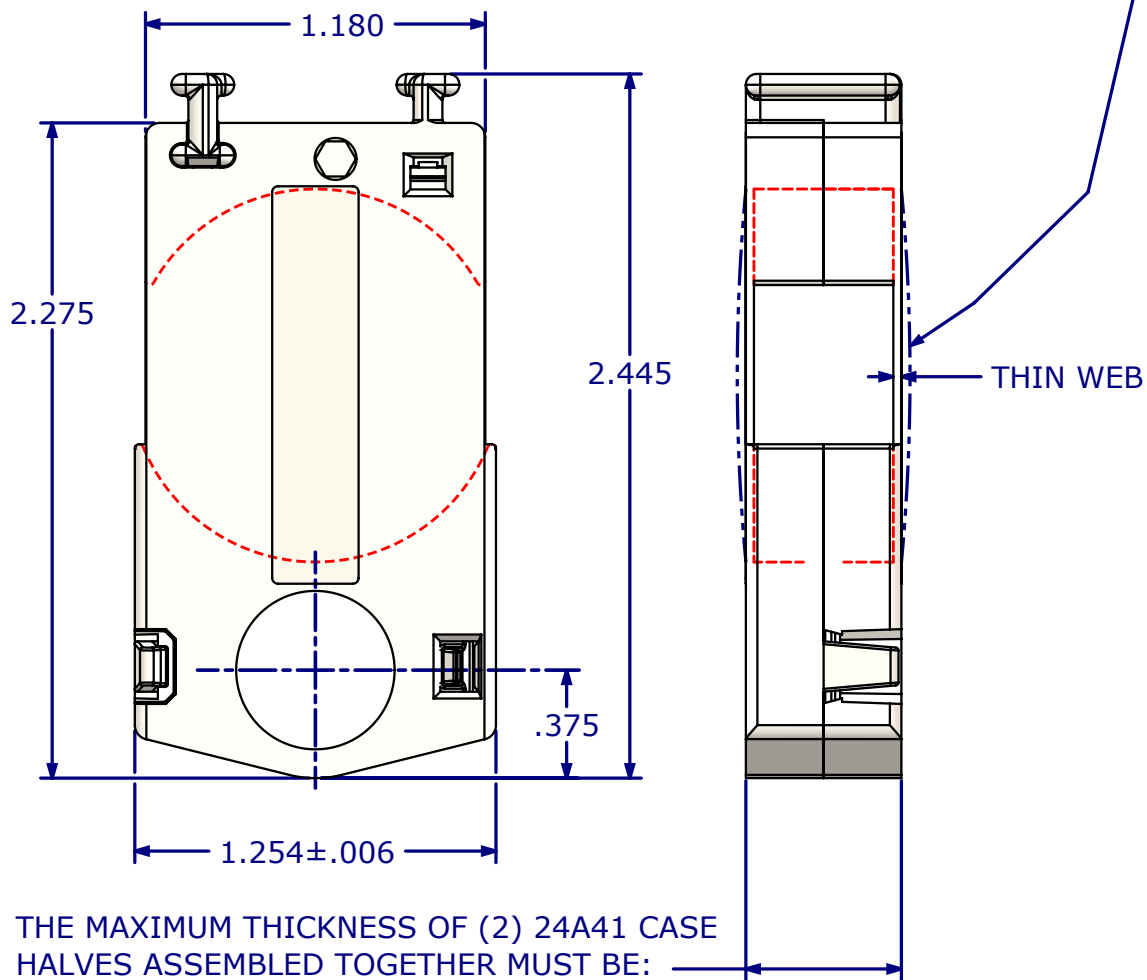


SLIGHT BULGING IN THIN WEB AREA IS PERMITTED IN THIS DIRECTION ONLY ON EACH CASE HALF.



**RT562 Case Half 21A41
Foot Print Dimensions
of (2) Assembled.**

THE MAXIMUM THICKNESS OF (2) 24A41 CASE HALVES ASSEMBLED TOGETHER MUST BE:

- (A) .575 MAXIMUM OVER THIN WEB AREA AND PATENT NUMBERS.
- (B) .548 MAXIMUM EVERYWHERE ELSE.

THIS IS THE PROPERTY OF
CALDWELL MFG. CO.
ANY USE OR REPRODUCTION WITHOUT
AUTHORIZATION BY THIS COMPANY IS PROHIBITED.

NOTE: DO NOT SCALE DRAWING!
UNLESS OTHERWISE SPECIFIED
ALL TOLERANCES ARE AS FOLLOWS:
TWO DECIMAL PLACES ± .013"
THREE DECIMAL PLACES ± .008"
ANGULAR ± 2°
FRACTIONS ± 1/64"

Solutions That Set New Standards CALDWELL Since 1888				
Manufacturing Company 2605 Manitou Road, Rochester, New York				
TITLE Case Half 24A41 (Foot Print of 2 Assembled) (RT)				
THIRD ANGLE PROJECTION		DRAWN ASJ	DATE 02/13/14	
		CHECKED	DATE	
A EX NO		APPROVED AMF	DATE 02/13/14	
SIZE		DWG NO	REV	
SCALE 1.5:1		co-24A41	5	
SHEET 1 OF 1				