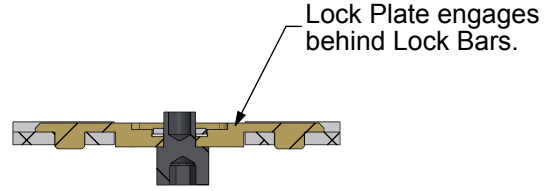
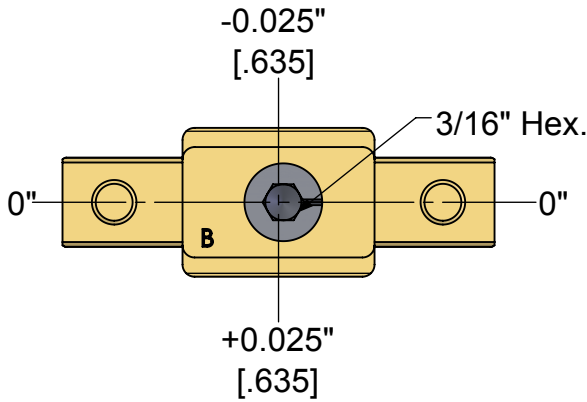
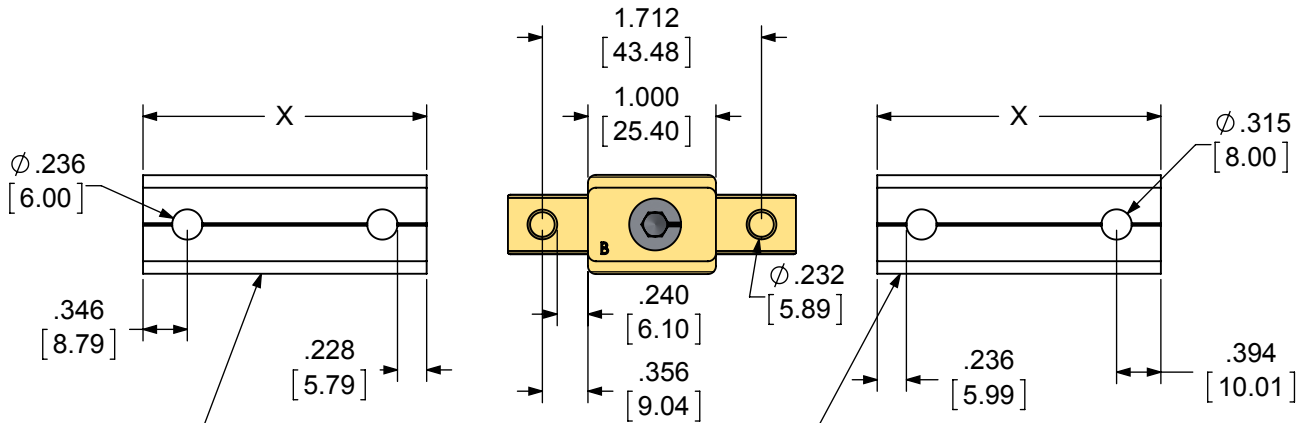
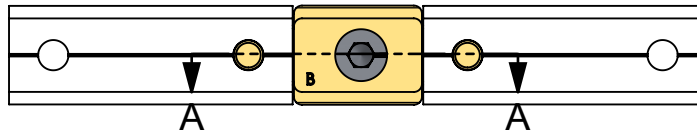


1315-XX Lock Plates

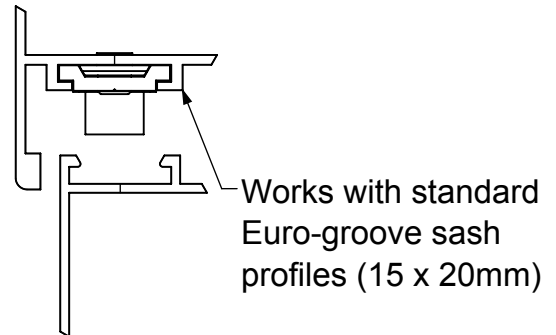
Low Profile



Adjust compression $\pm 0.025"$ [$\pm .635$]



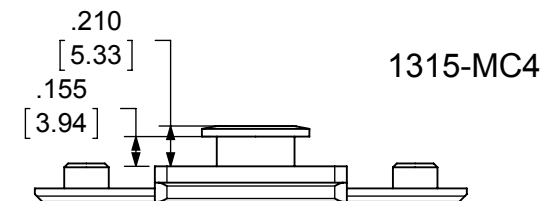
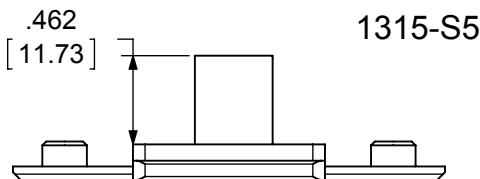
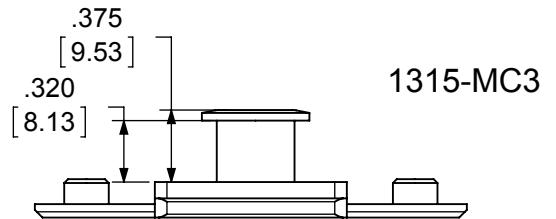
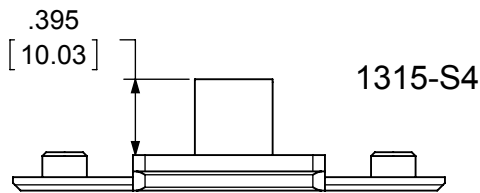
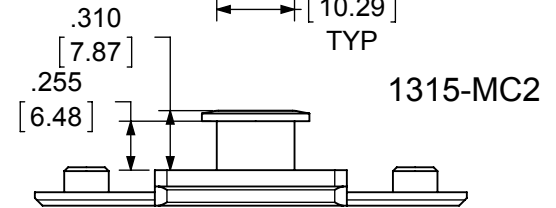
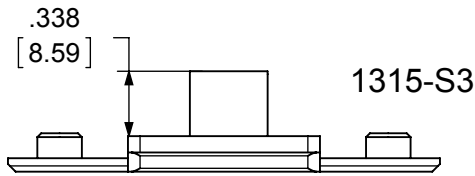
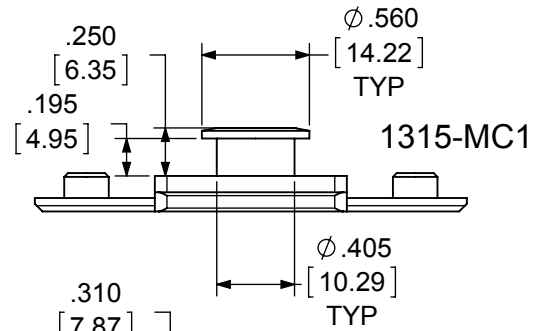
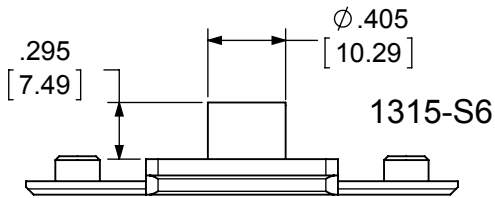
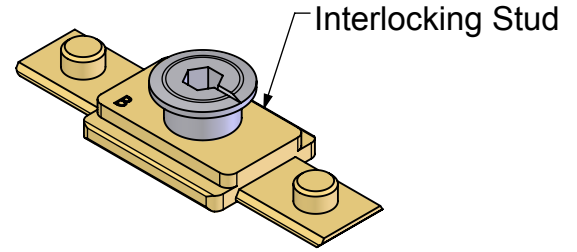
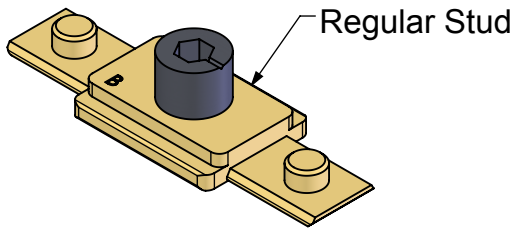
Lock Bars can be standard polyamide or aluminum, and can have either hole configuration.



1315 std impact twc; date 1/21/2015; snt 1 of 2

1315-XX Lock Plate

Low Profile, Options



Available Configurations	
Part #	Stud Height (Usable)
1315-S6	0.295" (7.493mm)
1315-S3	0.338" (8.585mm)
1315-S4	0.395" (10.03mm)
1315-S5	0.462" (11.73mm)
1315-MC1	0.195" (4.953mm)
1315-MC2	0.255" (6.477mm)
1315-MC3	0.320" (8.128mm)
1315-MC4	0.155" (3.937mm)

1315 std impact twc; date 1/21/2015; snt 2 of 2