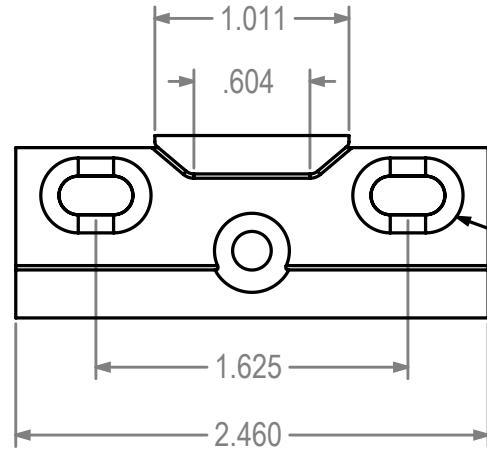
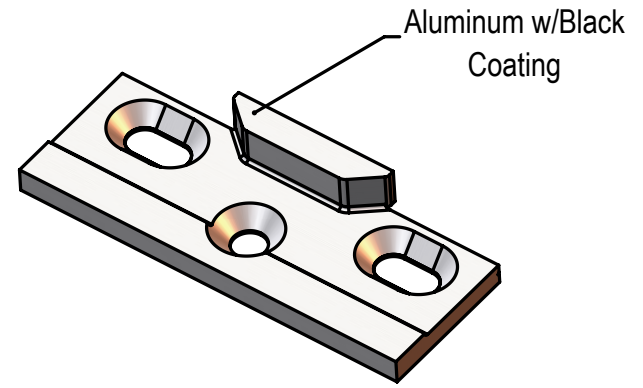


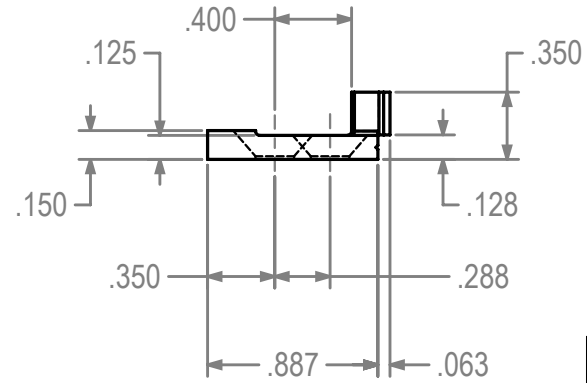
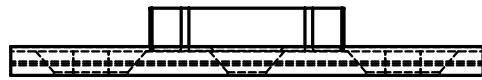
REVISIONS			
REV.#	DESCRIPTION	DATE	BY



Mount Using
#10 UC FH S/S Screws



8225 Keeper for MPL Systems



Dimensions Are For Reference Purposes Only

Solutions That Set New Standards CALDWELL Since 1888				
Manufacturing Company 2605 Manitou Road, Rochester, New York				
TITLE 8225 Keeper for MPL Systems (ADV)				
THIRD ANGLE PROJECTION 	DRAWN HV	DATE 9/9/14		
	CHECKED	DATE		
	APPROVED	DATE		
A	EX NO	DWG NO	8225 twc	REV
SIZE				0
SCALE 1:1	SHEET 1 OF 1			