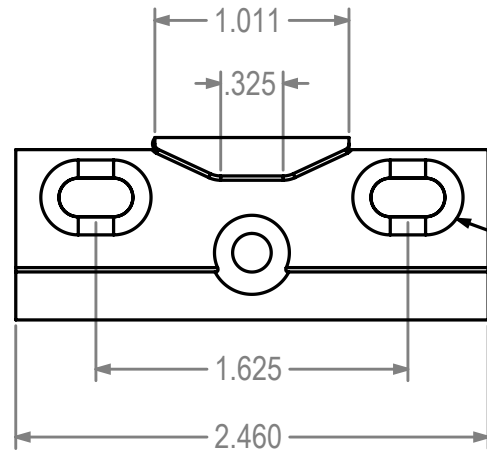
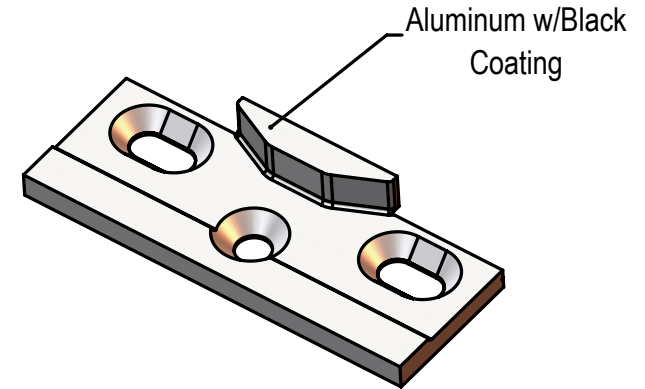


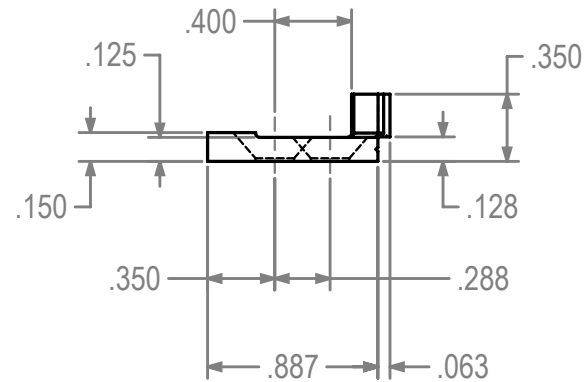
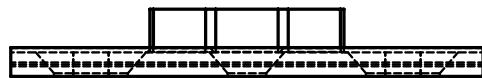
REVISIONS			
REV.#	DESCRIPTION	DATE	BY



Mount Using
#10 UC FH S/S Screws



8225-M2 Keeper for MPL Systems



Dimensions Are For Reference Purposes Only

Solutions That Set New Standards CALDWELL Since 1888		
Manufacturing Company 2605 Manitou Road, Rochester, New York		
TITLE 8225-M2 Keeper for MPL Systems (ADV)		
THIRD ANGLE PROJECTION 	DRAWN HV DATE 9/9/14	
	CHECKED DATE	
	APPROVED DATE	
A EX NO	DWG NO 8225-M2 twc	REV 0
SIZE	SCALE 1:1	SHEET 1 OF 1