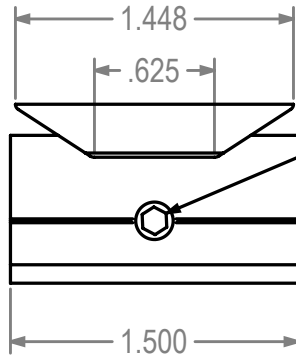
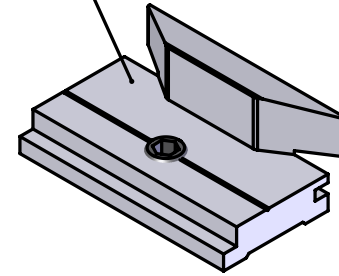


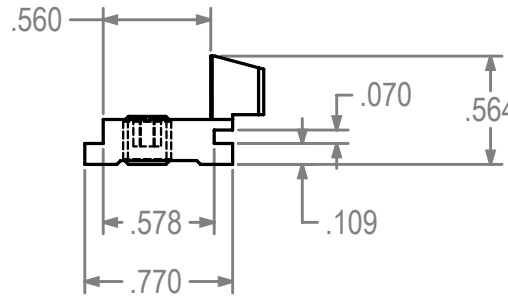
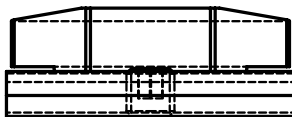
REVISIONS			
REV.#	DESCRIPTION	DATE	BY

Aluminum
w/Black Coating



Secure Using Set
Screw Provided

1395 Keeper for MPL Systems



Dimensions Are For Reference Purposes Only

Solutions That Set New Standards CALDWELL Since 1888		
Manufacturing Company 2605 Manitou Road, Rochester, New York		
TITLE 1395 Keeper for MPL Systems (ADV)		
THIRD ANGLE PROJECTION 	DRAWN HV DATE 9/11/14	
	CHECKED DATE	
	APPROVED DATE	
A EX NO	DWG NO	REV
SIZE	1395 twc	0
SCALE 1:1	SHEET 1 OF 1	