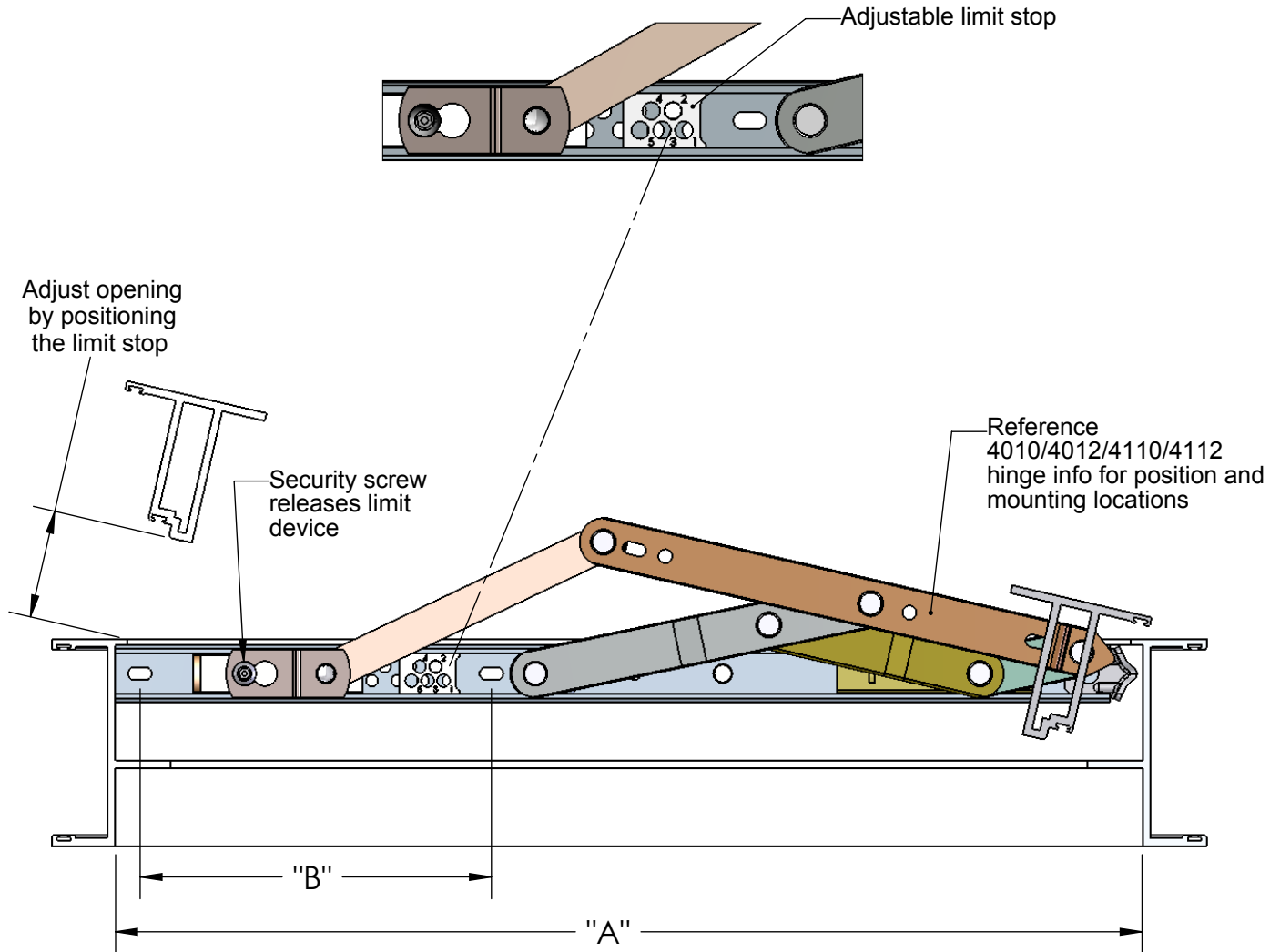


# MAGNUM™ Hinges

*(Integrated Series 4-Bar Casement Hinges;  
4-Bar Hinge and keyed Limit Device Combination;  
Base Hinge, 4010,4012/ 4110, 4112)*



| Part#          | Type             | Size           | "A" Inside Frame              | Vent Weight          | Max Opening | "B"              |
|----------------|------------------|----------------|-------------------------------|----------------------|-------------|------------------|
| 4010i<br>4110i | Inline<br>Offset | 10"<br>(254mm) | 16.2 - 23.0<br>(411mm-584mm)  | 76 lbs<br>(34.4 kg)  | 22°         | 5.525<br>(140mm) |
| 4012i<br>4112i | Inline<br>Offset | 12"<br>(305mm) | 20.0 - 27.0<br>(508mm-1016mm) | 115 lbs<br>(52.1 kg) | 30°         | 6.625<br>(168mm) |

Tensions Available: Commercial and loose rivet.

Hinge Mounting: Use #10 or M5 stainless steel pan head screws.

Hinge Capacity: Vent size and weight should not exceed the stated capacity of the hinge.

Opening Degree: For vents in high winds, severely limited opening or limited for life safety, the use of additional Limit/Friction Devices may be required (ex: 177, 419, 716).

A016 cat12 4010i 4012i 4110i 4112i hinges\_r1; date 4/22/2015